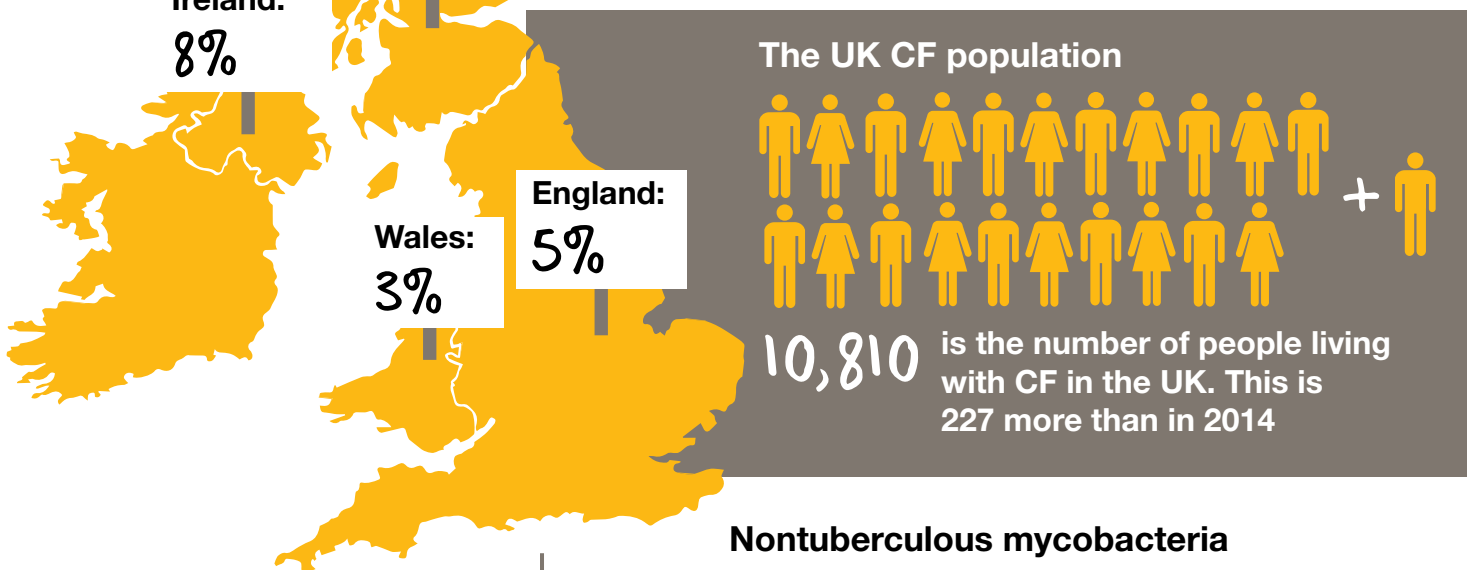
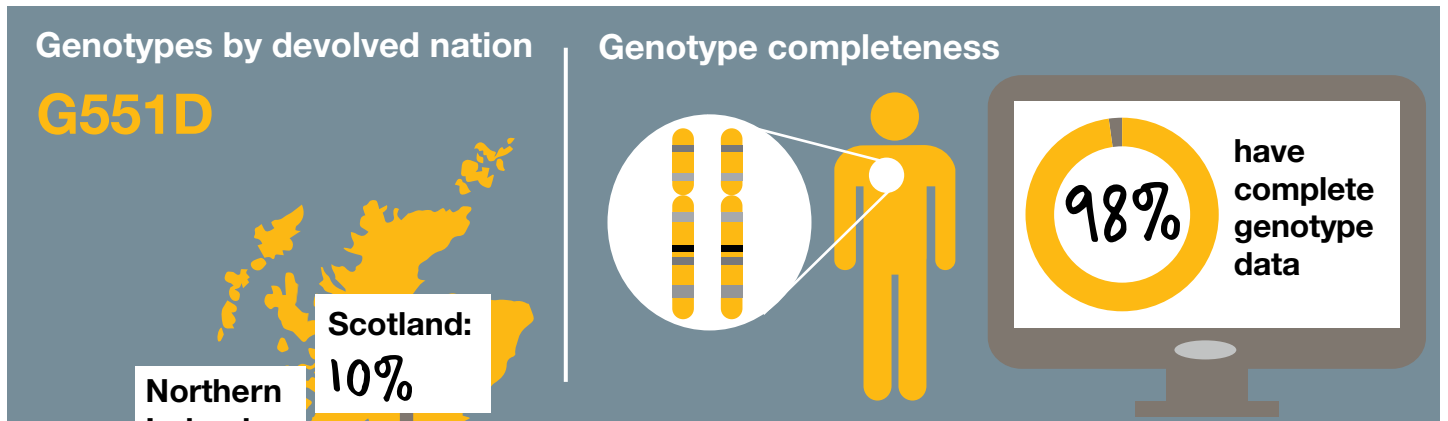


Cystic Fibrosis strength in numbers

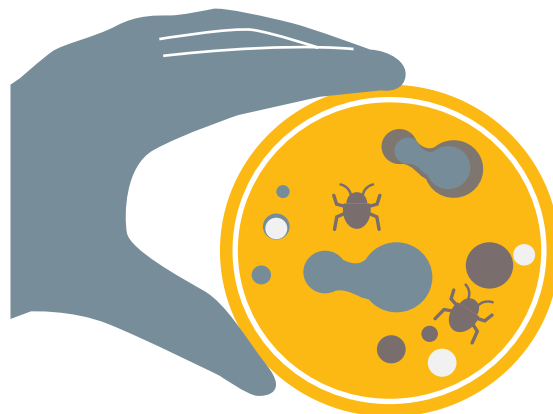
UK CF Registry Annual Data Report 2015 At a glance

Our 'at a glance' version of the UK CF Registry Annual Data Report 2015 highlights the key information from the full report, available at www.cysticfibrosis.org.uk/registry.

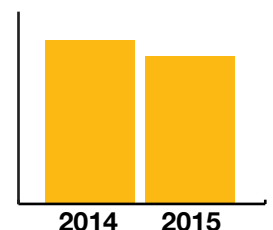


The map above shows the percentage of people with CF in each of the devolved nations with at least one copy of the G551D mutation, known as a genotype

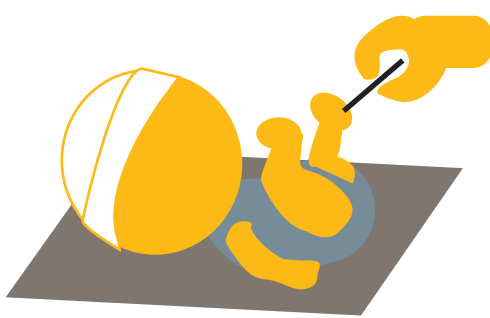
Nontuberculous mycobacteria



Prevalence has decreased from 6.2% in 2014 to 5.6% in 2015

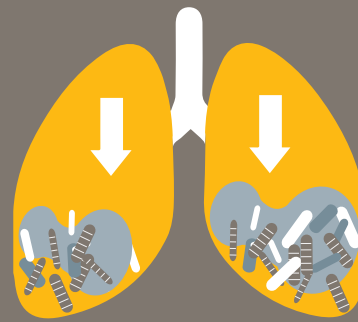


Diagnosis age



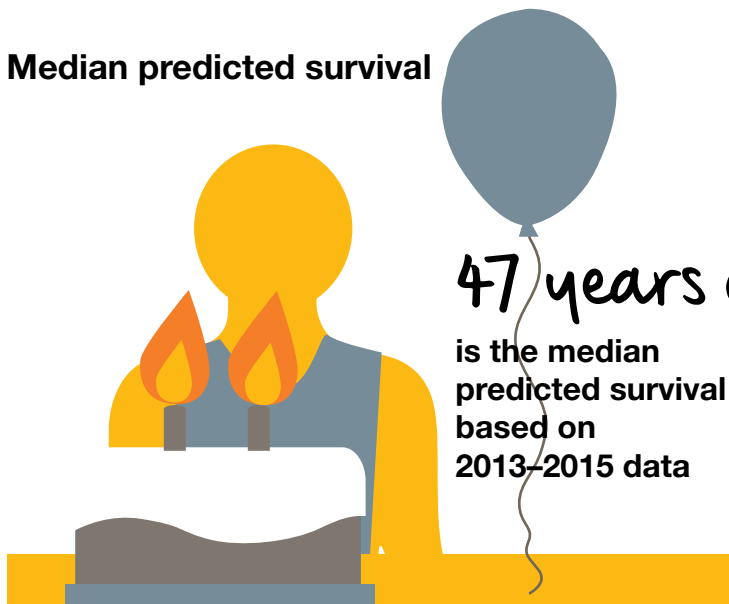
26 days
was the median age of diagnosis for people with CF under 16 in 2015

Chronic *Pseudomonas*

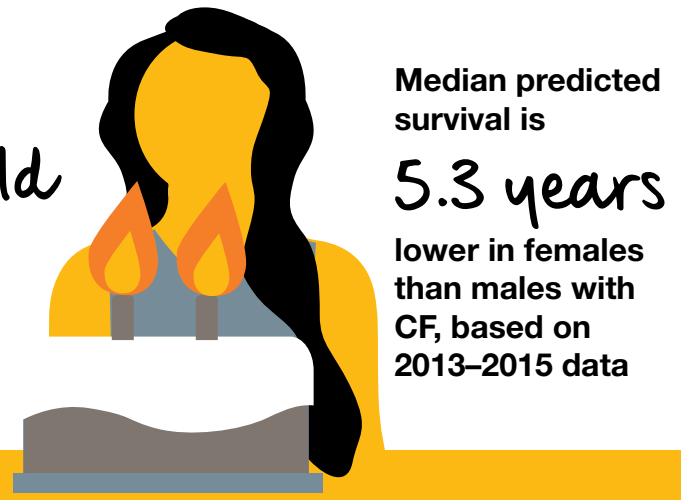


Chronic *Pseudomonas* has reduced by **15.2%** in people with CF aged 16–19 since 2008

Median predicted survival



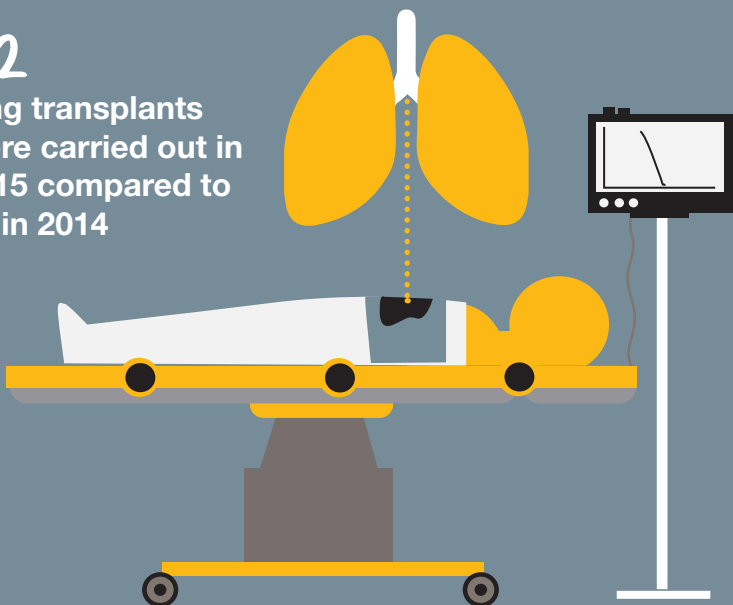
47 years old
is the median predicted survival based on 2013–2015 data



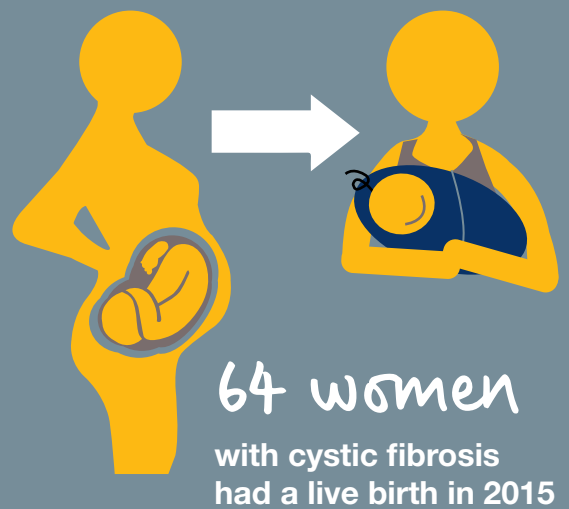
Median predicted survival is **5.3 years** lower in females than males with CF, based on 2013–2015 data

Transplant

42 lung transplants were carried out in 2015 compared to 59 in 2014



Pregnancy



64 women with cystic fibrosis had a live birth in 2015